

Portable Power



Power To Go.

KISAE offers two types of portable power units to serve your mobile needs: the Lithium battery-based Portable Powerpack 100, providing 100W of portable power for laptops and mobile devices, and the sealed lead-acid based Powerpack 800, an 800W power source ideal for running power tools, TVs, lights, computers, and so much more. These power products provide quick access to power and the ability to use them indoors without the need for fuel and the associated fumes. These products also feature AC outlets and convenient USB ports for charging your handheld devices. Whether you need portable power for around your home, campsite, or workplace, KISAE has a portable power solution for you.



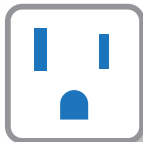
HANDY POWER YOU CAN TAKE WITH YOU

KISAE portable power solutions are designed for the person on the go who requires power around the home, campsite or worksite. These power products provide the confidence that comes from quick access to power, and the security that comes from being able to use them anywhere, anytime.



AC OUTLETS AND USB OUTLETS

KISAE portable power solutions provide running and recharging options that are universal in nature, from AC sockets that can run any AC load to USB ports for charging your handheld devices.



UNIQUE CONFIGURATIONS

KISAE provides both sealed lead acid and lithium configurations. Depending on the size and weight you desire and the charge cycles you wish to get from the product, KISAE can provide a portable power solution for you.



JUMPSTART DEAD BATTERIES

The KISAE Powerpack 800 comes complete with jumper cables, allowing you to boost a dead vehicle battery in an emergency.



Portable Power

AC Output

Regulatory Approved

Portable Use



Portable Power	120 VAC Series		230 VAC Series
	PP 100	PP 800	PP 800i

AC Output

Output Power	90W	800W	800W
Surge Power (Peak)	100W	1600W	1600W
Output Voltage/Frequency	120VAC / 60 Hz	120VAC / 60 Hz	230VAC / 50 Hz
Waveform	Modified Sine Wave	Modified Sine Wave	Modified Sine Wave
AC Receptacles	NEMA 5-15	NEMA 5-15	Euro, UK, Australia

DC Output

USB Port	1.0A, 2.1A x 2	2.1A x 1	2.1A x 1
Lighter plug socket	Not Applicable	15A	15A

Display Panel

Indicator	Power, Fault	Battery Voltage, Output Power, Warning & Error Code	
Digital Display (LED)	Not Applicable	Ultra bright White LEDs	
Light	Not Applicable		

Battery

Type	Lithium Polymer	Sealed Lead Acid	
Capacity	90.7 Wh	312Wh, 12V 26Ah	

Regulatory Compliance

Markings	cETLus	cETLus	CE
Conformance	UL & CSA Standards	UL & CSA Standards	LVD, EMC

Enclosure

Weight	1.65 lbs.	28 lbs.	12.7 Kg
Dimension	6.4 x 6 x 1.4"	12.8 x 7.6 x 10.2"	324 x 193 x 260mm



PP 100
100W Lithium Powerpack



PP 800
800W Powerpack



PP 800i
800W 230V Powerpack

Accessories

External AC Charger	15V / 1A	15V / 2A	
DC Charging Cable	Not Applicable	Lighter Plug Cable	
Jump Start Cable	Not Applicable	Heavy Duty Jump Start Cable	

Portable Power

Application Examples

Regulatory Approved

Portable Use



USA



UK

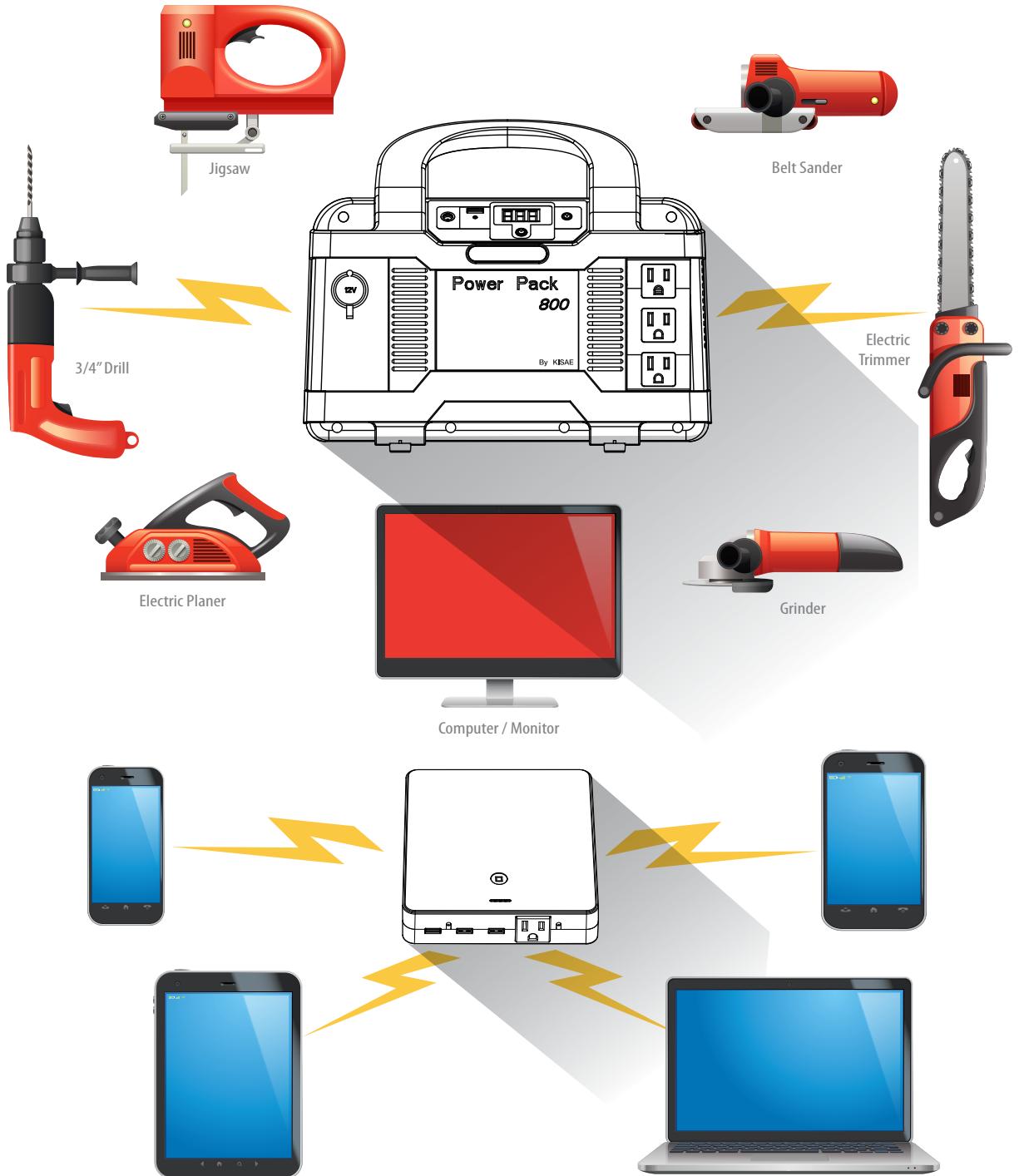


EU



AU/NZ

The PP800 is also available in a 230V version.



Solar Charge Controllers



Provides
optimal
performance
from your
PV Panels &
Batteries

KISAE Solar Charge Controllers provide maintenance-free protection for your batteries and solar panels in off-grid applications. These controllers provide a regulated output to prevent batteries from overcharging. Load disconnect protects batteries from being over-discharged. KISAE Charge Controllers have LED status indicators to provide a quick reference to Charger, Battery and Load status.

Product Features:

PWM Controller models capable up to 30 Amps of Array Current or up to 720 Watts of solar power.

MPPT Controller is capable to 50A/12V or 30A/24V charging current or up to 720 Watts of solar power.

Maintains batteries in a fully charged state.

Protects battery life from overcharging and discharging.

LED Digital Display shows charging and load currents and battery voltage (SC1230D and MPPT models).

2-Year Warranty



OPTIMAL BATTERY PERFORMANCE

KISAE Solar Charge Controllers ensure optimal performance from batteries. They provide regulated output to prevent batteries from overcharging. Load disconnect protects batteries from being over discharged.



MPPT DESIGNS

Some KISAE charge controllers feature MPPT (Maximum Power Point Tracking) technology which optimizes the solar charge and the amount of power generated from the sun.



DIGITAL DISPLAYS

Some KISAE charge controllers feature digital displays to provide quick, at-a-glance reference to system information. They are also used for advanced unit program setting for each unique solar installation.



RESIDENTIAL & INDUSTRIAL APPLICATIONS

Whether installing a charge controller for your own off-grid vacation home or for an industrial solar array installation, KISAE has a great product option just for you.



Solar Charge Controllers

Maintenance-free Battery Protection
SC1210LD, SC1220LD, SCD1230 - PWM Line
Commercial / Residential Off-Grid Use



PWM Solar Charge Controllers	SC 1210LD	SC 1220LD	SCD 1230
------------------------------	-----------	-----------	----------

PV Input

PV Input Voltage Range	14.5 - 24V	14.5 - 24V	14.5 - 48V
Maximum PV Input Current	10A	20A	30A
PV Solar Panel Rating (reference)	120W	240W	12V: 360W, 24V: 720W

Solar Controller Output (Battery)

Battery Rating	12V	12V	12V / 24V (Auto Detect)
Battery Type	Sealed / Flooded	Sealed / Flooded	Gel, AGM, Flooded, Lithium, Program
Max. Charge Current	10A	20A	30A
Charge Voltage Range	14.2 - 14.6V	14.2 - 14.6V	13.9 - 14.6V / 27.8 - 29.2V
Float Voltage Range	13.4 - 13.8V	13.4 - 13.8V	13.4 - 13.8V / 26.6 - 27.6V
Parasitic Current	< 10 mA	< 15 mA	< 25mA

DC Output to Load

Load Current (Maximum)	10A	20A	30A
------------------------	-----	-----	-----

Protection and Features

PV Reverse Polarity	Protected	Protected	Protected
Battery Overcharge	Yes	Yes	Yes
Load Over-Discharge Voltage	< 11.5V	< 11.5V	< 11.5V / 23.0V
Load Reconnected Voltage	12.6V	12.6V	12.6V / 25.2V
Built-in Temperature Sensor	Yes, temperature compensation on charging voltage	Yes, temperature compensation on charging voltage	Yes, temperature compensation on charging voltage

Indicator (SC Series) / Digital Display (SCD Series)

Indicators	Charging / Load Disconnect LED indicator	Charging / Load Disconnect LED indicator	Not Applicable
Battery Charging Status			Voltage / Current / Stage
DC Load Status	Not Applicable	Not Applicable	Load Current
DC Load Timer			Built-in clock for load ON/OFF

Enclosure

Weight	0.65 lbs.	0.65 lbs.	1.0 lbs.
Dimension (H x W x D)	4.1 x 4.1 x 1.3"	4.1 x 4.1 x 1.3"	4.7 x 6.7 x 1.8"



Abso MPPT Solar Charge Controllers

Optimal
charge and
maintenance
for off-grid
applications

KISAE MPPT Solar Charge Controllers provide maintenance-free protection for your batteries and solar panels in off-grid applications. These controllers provide a regulated output to prevent batteries from overcharging. Load disconnect protects batteries from being over-discharged. LED status indicators provide a quick reference to Charger, Battery and Load status.

Product Features:

MPPT models capable up to 50A/12V or 30A/24V charging current, or up to 720 Watts of solar power.

Charge batteries the way the battery manufacturers recommend.

Protects battery from overcharging and discharging.

Optional LED Digital Display shows system information and use for advanced program setting.

Two Year Warranty



Abso MPPT Solar Charge Controllers

Maintenance-free Battery Protection

MPT600 - MPPT Line

Commercial / Residential Off-Grid Use



MPPT Solar Charge Controller	MPT 600	
---------------------------------	---------	--

PV Input (DC)

DC Input Range	12V: 15 - 100Vdc, 24V: 30 - 100Vdc	
Maximum PV Open Current Voltage	100V	
PV Over Voltage Recovery	95V	
PV Input Current	12V: 50A Maximum, 24V: 30A Maximum	
MPPT Tracking Efficiency	> 97%	
PV Solar Panel Rating	720W Maximum	

Solar Controller Output (Battery)

Battery Rating	12V System: <17.5V, 24V System: >17.5V	
Battery Type	8 battery types include LiFePO4 (on Main Unit)	
	Gel, AGM, Flooded, Lithium (program on remote)	
Output Current	12V: 50A Maximum, 24V: 30A Maximum	
Charge Voltage Range		
Charge	12V: 13.5 - 15.5V, 24V: 27.0 - 31.0V	
Float	12V: 13.0 - 13.8V, 24V: 26.0 - 27.6V	
Equalize Flooded Battery Setting	12V: 15.5V, 24V: 31.0V (10% of current setting)	
Charging Control	5 stages (Test/Bulk/Absorption/Float/Recharge)	
Temperature Compensation	Yes	
Parasitic Current	< 100 mA	
Current Draw from Battery	< 55 mA no Remote Panel < 75 mA with Remote Panel	
Efficiency	> 95% (target)	

Protection and Features

Over Temperature	Warning, Auto Shutdown	
Cooling	Convection	
Temperature Setting	Low, Normal, High	
Battery Temperature Sensor Port	RJ12 (for use with optional Battery Temperature Sensor)	
Digital Display Port	RJ12 (for use with optional Battery Display Panel)	

Enclosure

Protection Category	IP43 (Electronic components) IP22 (Connection Area)	
Dimension (H x W x D)	70 x 170 x 221 mm	

Accessory (Optional)

Remote Digital Display	For viewing unit status and adjusting settings	
Battery Temperature Sensor	For battery charging voltage adjustment	

Abso MPPT Solar Charge Controllers

Maintenance-free Battery Protection

MPT600 - MPPT Line

Commercial / Residential Off-Grid Use

